

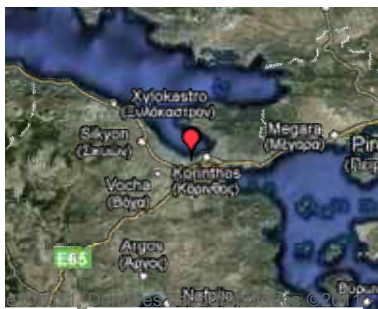
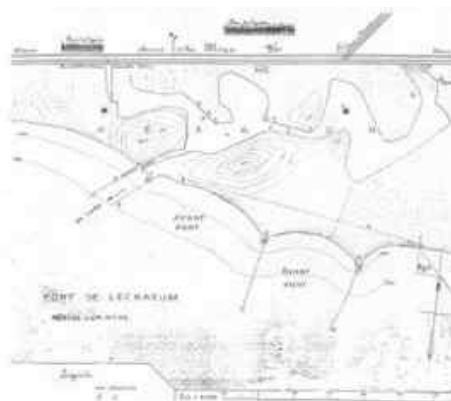
Corinth - LechaeonFeatures 

Fig. 1 The port of Lechaeon in 1907 after Georgiades (1907, pl. I)

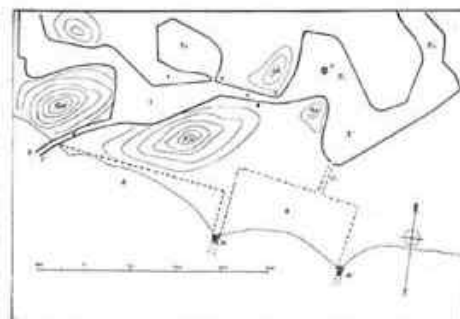


Fig. 2 The port of Lechaeon after Paris (1915, fig. 1)



Fig. 3 Aerial view of Lechaeon in 1960. A corner is evident at the extension of the western mole (Theodoulou 2002, fig. 3)



Fig. 4 Map of the harbour area with the visible remains
(Theodoulou 2002, fig. 11)

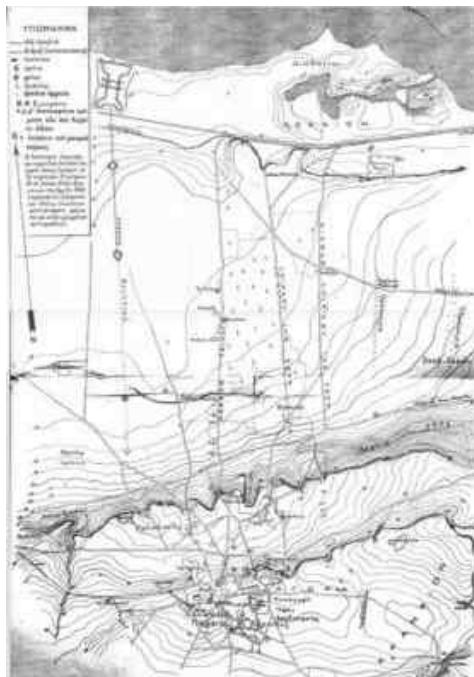


Fig. 5 Map of the broader harbour area and the observations
of Skias (1907, fig. 1)



Fig. 6 View of the channel guiding to the sea from the inner
eastern basin. Ashlar blocks are visible determining the
eastern side of it (Theodoulou 2002, fig. 8)





Fig. 7 View of the build up southern bank of the eastern basin, possibly a pier if the low land further was one more basin of the inner harbour (Theodoulou 2002, fig. 7)



Fig. 8 View of the build southern bank of the eastern basin (Theodoulou 2002, fig. 6)



Fig. 9 Vertical blocks at the build up northern bank of the eastern basin, possibly pollards for ships berthing (Theodoulou 2002, fig. 5)



Fig. 10 View of the technical islet in the western inner basin, probably a base for a statue of a lighthouse. (Theodoulou 2002, fig.10)